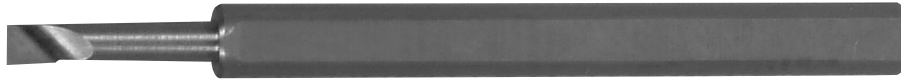
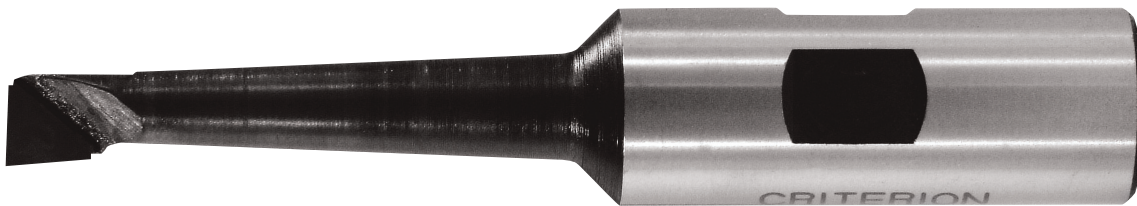


Boring Tools

Solid Carbide



Brazed Carbide



CRITERION Precision Tooling Systems

765 West 16th Street • Costa Mesa • CA • 92627

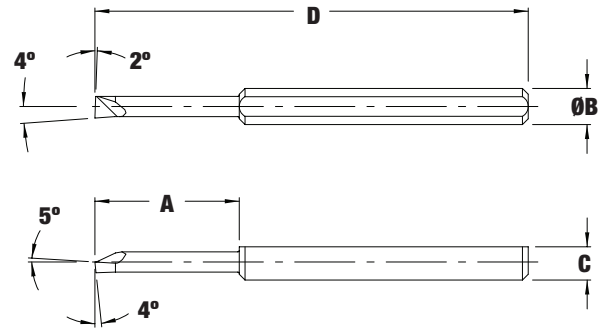
Phone: 800.854.7441 • 949.631.5444 Fax: 949.631.4928

www.criterionmachineworks.com

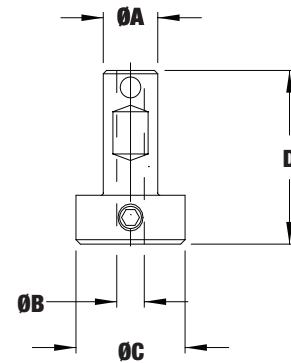
1/8" & 1/4" SOLID CARBIDE BORING TOOLS

PART NO.	DESCRIPTION	MIN. BORE DIA.	A	ØB	C	D
15200	CBT-050150	.050	.150	.125	.115	1.500
15201	CBT-050300		.300			
15202	CBT-050400		.400			
15203	CBT-060150	.060	.150			
15204	CBT-060300		.300			
15205	CBT-060500		.500			
15206	CBT-080150	.080	.150			
15207	CBT-080300		.300			
15208	CBT-080500		.500			
15209	CBT-100200	.100	.200			
15210	CBT-100400		.400			
15211	CBT-100600		.600			
15212	CBT-100700	.700				
15213	CBT-110200	.110	.200			
15214	CBT-110400		.400			
15215	CBT-110600		.600			
15216	CBT-110700		.700			
15246	CBT-120250	.120	.250	.250	.230	2.500
15247	CBT-120375		.375			
15248	CBT-120500		.500			
15249	CBT-120625		.625			
15250	CBT-120750		.750			
15251	CBT-140250	.140	.250			
15252	CBT-140375		.375			
15253	CBT-140500		.500			
15254	CBT-140625		.625			
15255	CBT-140750	.750				
15256	CBT-160375	.160	.375			
15257	CBT-160500		.500			
15258	CBT-160625		.625			
15259	CBT-160750		.750			
15260	CBT-160875		.875			
15261	CBT-180500	.180	.500			
15262	CBT-180625		.625			
15263	CBT-180750		.750			
15264	CBT-180875		.875			
15265	CBT-1801000		1.000			
15266	CBT-1801125	1.125				
15267	CBT-200500	.200	.500			
15268	CBT-200625		.625			
15269	CBT-200750		.750			
15270	CBT-200875		.875			
15271	CBT-2001000		1.000			
15272	CBT-2001250		1.250			

- 1/8" SHANK TOLERANCE $-.0001"/-.0003"$
- 1/4" SHANK TOLERANCE $-.0001"/-.0005"$
- SHANK O.A.L. TOLERANCE $\pm .010"$
- 10% COBALT MICRO GRAIN CARBIDE
- GROUND FLAT TO INSURE CUTTING EDGE IS ON CENTER LINE

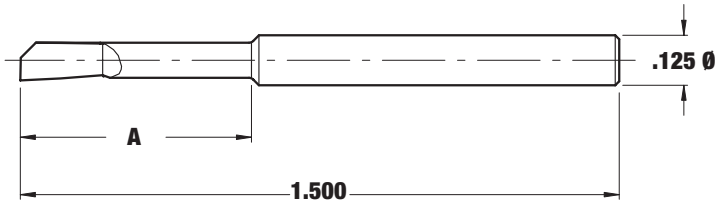


Carbide Tool Holder



PART NO.	DESCRIPTION	ØA	ØB	ØC	D
20195	CTH-125250	.250	.125	.500	.700
15160	CTH-125375	.375	.125	.500	2.000
15151	250375 SLEEVE	.375	.250	—	1.300
15165	CTH-250500	.500	.250	.625	2.000

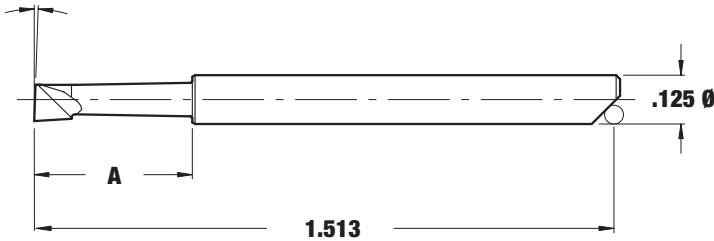
HELICAL BACK RAKE CARBIDE BORING TOOLS



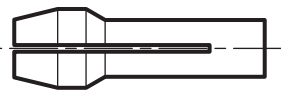
- 1/8" SHANK TOLERANCE $-.0001"/-.0003"$
- SHANK O.A.L. TOLERANCE $\pm .010"$
- 10% COBALT MICRO GRAIN CARBIDE
- HELICAL GROUND TOP RAKE FOR BETTER CHIP CONTROL

PART NO.	DESCRIPTION	MIN. BORE DIA.	A
15234	CBT-035125-HB	.035	.125
15235	CBT-035187-HB	.035	.187
15236	CBT-040187-HB	.040	.187
15237	CBT-040250-HB	.040	.250
15238	CBT-050312-HB	.050	.312
15239	CBT-060375-HB	.060	.375
15240	CBT-070437-HB	.070	.437
15241	CBT-080500-HB	.080	.500
15242	CBT-090500-HB	.090	.500
15243	CBT-100562-HB	.100	.562
15244	CBT-120625-HB	.120	.625
15245	CBT-1201000-HB	.120	1.000

QUALIFIED LENGTH CARBIDE BORING TOOLS

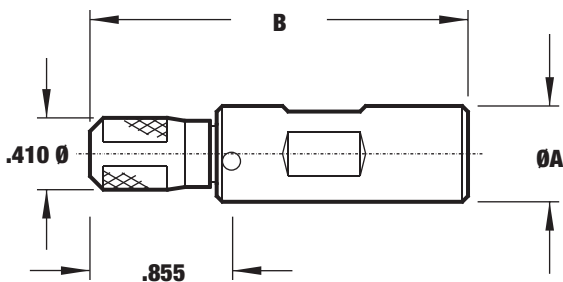


- 1/8" SHANK TOLERANCE $-.0001"/-.0003"$
- 10% COBALT MICRO GRAIN CARBIDE
- GROUND LOCATOR INSURES CUTTING EDGE IS ON CENTER LINE
- LENGTH REPEATABILITY $+.001"/-.001"$



**CHD-125
COLLET**

QUALIFIED LENGTH TOOL HOLDER

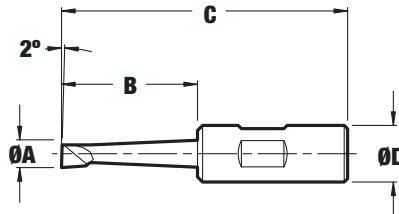


PART NO.	DESCRIPTION	MIN. BORE DIA.	A
15217	CBT-050150-QL	.050	.150
15218	CBT-050300-QL		.300
15219	CBT-050400-QL		.400
15220	CBT-060150-QL	.060	.150
15221	CBT-060300-QL		.300
15222	CBT-060500-QL		.500
15223	CBT-080150-QL	.080	.150
15224	CBT-080300-QL		.300
15225	CBT-080500-QL		.500
15226	CBT-100200-QL	.100	.200
15227	CBT-100400-QL		.400
15228	CBT-100600-QL		.600
15229	CBT-100700-QL		.700
15230	CBT-110200-QL	.110	.200
15231	CBT-110400-QL		.400
15232	CBT-110600-QL		.600
15233	CBT-110700-QL		.700

PART NO.	DESCRIPTION	ØA	B
20196	CHD-375-QL	.375	1.970
20197	CHD-500-QL	.500	1.970
20198	CHD-625-QL	.625	2.300
20199	CHD-750-QL	.750	2.300

CARBIDE TIPPED BORING TOOLS

- SBT Tools are C-6 carbide for steel applications
- ABT Tools are C-2 carbide for cast iron and non-ferrous applications
- Tools have 2 flats to insure cutting edge is on centerline
- Tools with a Minimum Bore Diameter of .250 and under feature a solid carbide neck and head



PART NO.	DESCRIPTION	MIN. BORE ØA	B	C	ØB	PART NO.	DESCRIPTION	MIN. BORE ØA	B	C
10770	SBT-062A	.062	.250	1.590	3/8"	15770	ABT-062A	.062	.250	1.590
10771	SBT-093A	.093	.375	1.750		15771	ABT-093A	.093	.375	1.750
10700	SBT-125A	.125	.500	1.875		15700	ABT-125A	.125	.500	1.875
10701	SBT-187A	.187	.812	2.156		15701	ABT-187A	.187	.812	2.156
10702	SBT-250A	.250	1.125	2.468		15702	ABT-250A	.250	1.125	2.468
10703	SBT-312A	.312	1.500	2.812		15703	ABT-312A	.312	1.500	2.812
10704	SBT-375A	.375	1.875	3.187		15704	ABT-375A	.375	1.875	3.187
10705	SBT-500A	.500	2.312	3.500		15705	ABT-500A	.500	2.312	3.500
10772	SBT-062B	.062	.250	1.590		1/2"	15772	ABT-062B	.062	.250
10773	SBT-093B	.093	.375	1.750	15773		ABT-093B	.093	.375	1.750
10706	SBT-125B	.125	.500	1.875	15706		ABT-125B	.125	.500	1.875
10707	SBT-187B	.187	.812	2.156	15707		ABT-187B	.187	.812	2.156
10708	SBT-250B	.250	1.125	2.468	15708		ABT-250B	.250	1.125	2.468
10709	SBT-312B	.312	1.500	2.812	15709		ABT-312B	.312	1.500	2.812
10710	SBT-375B	.375	1.750	3.187	15710		ABT-375B	.375	1.750	3.187
10711	SBT-500B	.500	2.187	3.500	15711		ABT-500B	.500	2.187	3.500
10720	SBT-500D	.500	2.187	3.945	3/4"		15720	ABT-500D	.500	2.187
10765	SBT-625D	.625	2.750	4.468		15765	ABT-625D	.625	2.750	4.468
10721	SBT-750D	.750	3.000	4.687		15721	ABT-750D	.750	3.000	4.687
10722	SBT-1000D	1.000	3.500	5.125		15722	ABT-1000D	1.000	3.500	5.125
10723	SBT-1250D	1.250	4.000	5.562		15723	ABT-1250D	1.250	4.000	5.562
10724	SBT-500E	.500	2.375	4.250	1"	15724	ABT-500E	.500	2.375	4.250
10766	SBT-625E	.625	2.625	4.468		15766	ABT-625E	.625	2.625	4.468
10725	SBT-750E	.750	2.875	4.687		15725	ABT-750E	.750	2.875	4.687
10726	SBT-1000E	1.000	3.500	5.125		15726	ABT-1000E	1.000	3.500	5.125
10727	SBT-1250E	1.250	3.875	5.562		15727	ABT-1250E	1.250	3.875	5.562