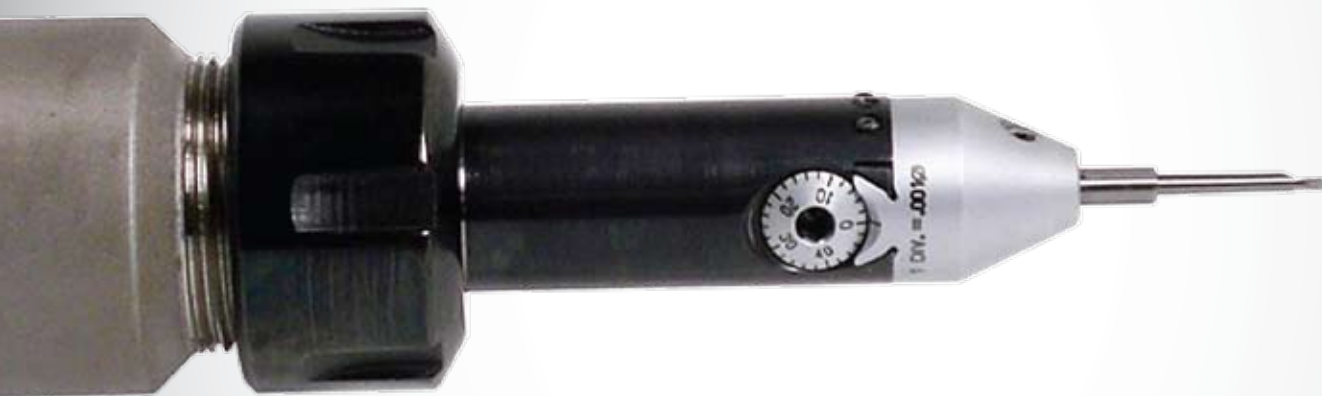


CBER PRECISION BORING SYSTEM

Designed for ER Collet Holders



 **CRITERION**
PRECISION TOOLING SYSTEMS

765 West 16th Street • Costa Mesa • CA • 92627

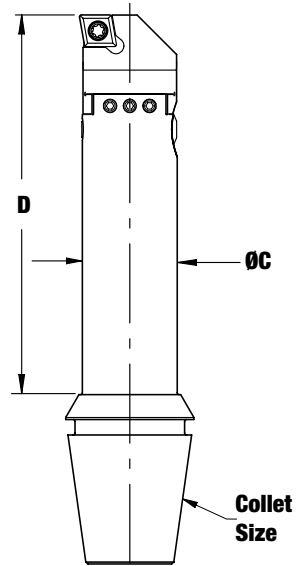
Phone: 800-854-7441 • Fax: 949-631-4923

e-mail: cmw@criterionmachineworks.com

www.criterionmachineworks.com

CRI-BORE ER COLLET BORING SYSTEM

PART NO.	DESCRIPTION	MIN. BORE DIA.	MAX. BORE DIA.	ØC	D	COLLET SIZE	INSERT I.C.	INSERT "T"	INSERT STYLE
26716	CBER20-CP/DI-S BORING HEAD**	.672	.944	.625	1.500	ER20	.250	.093	CC or CP
26700	CBER20-CP/DI BORING HEAD**	.672	.944	.625	2.500	ER20	.250	.093	CC or CP
26717	CBER20-TP-S BORING HEAD	.672	.944	.625	1.500	ER20	.250	.093	TPGT/TPGW
26701	CBER20-TP BORING HEAD	.672	.944	.625	2.500	ER20	.250	.093	TPGT/TPGW
26719	CBER25-CP/DI-S BORING HEAD	.825	1.087	.750	1.500	ER25	.250	.093	CC or CP
26703	CBER25-CP/DI BORING HEAD	.825	1.087	.750	3.000	ER25	.250	.093	CC or CP
26720	CBER25-TP-S BORING HEAD	.825	1.087	.750	1.500	ER25	.250	.093	TPGT/TPGW
26704	CBER25-TP BORING HEAD	.825	1.087	.750	3.000	ER25	.250	.093	TPGT/TPGW
26722	CBER32-CP/DI-S BORING HEAD	1.050	1.320	1.000	2.000	ER32	.250	.093	CC or CP
26706	CBER32-CP/DI BORING HEAD	1.050	1.320	1.000	4.000	ER32	.250	.093	CC or CP
26723	CBER32-CP/DI-TA-S BORING HEAD*	1.050	1.320	1.000	2.700	ER32	.250	.093	CC or CP
26707	CBER32-CP/DI-TA BORING HEAD*	1.050	1.320	1.000	4.700	ER32	.250	.093	CC or CP
26724	CBER32-TP-S BORING HEAD	1.050	1.320	1.000	2.000	ER32	.250	.093	TPGT/TPGW
26708	CBER32-TP BORING HEAD	1.050	1.320	1.000	4.000	ER32	.250	.093	TPGT/TPGW
26725	CBER32-TP-TA-S BORING HEAD*	1.050	1.320	1.000	2.700	ER32	.250	.093	TPGT/TPGW
26709	CBER32-TP-TA BORING HEAD*	1.050	1.320	1.000	4.700	ER32	.250	.093	TPGT/TPGW
26727	CBER40-CP/DI-S BORING HEAD	1.300	1.600	1.250	2.500	ER40	.250	.093	CC or CP
26711	CBER40-CP/DI BORING HEAD	1.300	1.600	1.250	5.000	ER40	.250	.093	CC or CP
26728	CBER40-CP/DI-TA-S BORING HEAD*	1.300	1.600	1.250	3.200	ER40	.250	.093	CC or CP
26712	CBER40-CP/DI-TA BORING HEAD*	1.300	1.600	1.250	5.700	ER40	.250	.093	CC or CP
26729	CBER40-TP-S BORING HEAD	1.300	1.600	1.250	2.500	ER40	.250	.093	TPGT/TPGW
26713	CBER40-TP BORING HEAD	1.300	1.600	1.250	5.000	ER40	.250	.093	TPGT/TPGW
26730	CBER40-TP-TA-S BORING HEAD*	1.300	1.600	1.250	3.200	ER40	.250	.093	TPGT/TPGW
26714	CBER40-TP-TA BORING HEAD*	1.300	1.600	1.250	5.700	ER40	.250	.093	TPGT/TPGW

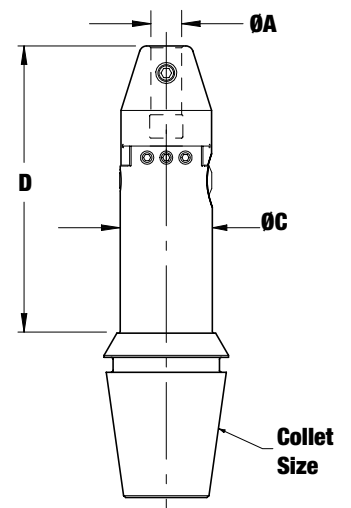


* -TA Style Boring Systems have a 50 millionths on diameter Micro Adjusting Dial. The total movement of the Micro Adjusting Dial is .006" on diameter.

** CBER20-CP/DI Style Boring Systems Minimum Bore Diameter when using a CC style insert is .750"

SGL ER COLLET BORING SYSTEM

PART NO.	DESCRIPTION	MIN. BORE DIA.	MAX. BORE DIA.	ØA	ØC	D	COLLET SIZE
26718	CBER20-SGL-S BORING HEAD	.050	.380	.125	.625	1.500	ER20
26702	CBER20-SGL BORING HEAD	.050	.380	.125	.625	2.500	ER20
26721	CBER25-SGL-S BORING HEAD	.050	.470	.250	.750	1.687	ER25
26705	CBER25-SGL BORING HEAD	.050	.470	.250	.750	3.187	ER25
26726	CBER32-SGL-S BORING HEAD	.120	.645	.375	1.000	2.437	ER32
26710	CBER32-SGL BORING HEAD	.120	.645	.375	1.000	4.437	ER32
26731	CBER40-SGL-S BORING HEAD	.250	.800	.500	1.250	2.781	ER40
26715	CBER40-SGL BORING HEAD	.250	.800	.500	1.250	5.281	ER40



COVER THE FULL RANGE OF A CBER SYSTEM WITH A CBER KIT

CBER BORING KITS ARE VERSATILE AND CONTAIN BOTH THE BAR HOLDER AND INSERT HOLDER TO
COVER THE FULL RANGE OF THE BORING SYSTEM

PART NO.	DESCRIPTION	KIT CONTAINS
26780	CBER20-CP BORING KIT	CBER20-CP/DI, SGL-0625 BAR HOLDER, ER20 COLLET NUT, ER20 COLLET NUT WRENCH, CBT-050300, CBT-060300, CBT-080300, CBT-100400, CBT-110400 CARBIDE BORING TOOLS, (10) CPMT-2(1.5)0-UF C-6 TIN COATED CARBIDE INSERTS AND STORAGE CASE
26781	CBER20-TP BORING KIT	CBER20-TP, SGL-0625 BAR HOLDER, ER20 COLLET NUT, ER20 COLLET NUT WRENCH, CBT-050300, CBT-060300, CBT-080300, CBT-100400, CBT-110400 CARBIDE BORING TOOLS, (10) TPGT-2(1.5)1-2C C-6 TIN COATED CARBIDE INSERTS AND STORAGE CASE
26782	CBER25-CP BORING KIT	CBER25-CP/DI, SGL-0750 BAR HOLDER, ER25 COLLET NUT, ER25 COLLET NUT WRENCH, CBT-050300, CBT-060300, CBT-080300, CBT-100400, CBT-110400, CBT-120500, CBT-140500, CBT-160625, CBT-180750, CBT-200750 CARBIDE BORING TOOLS, CTH-125250 CARBIDE TOOL HOLDER, (10) CPMT-2(1.5)0-UF C-6 TIN COATED CARBIDE INSERTS AND STORAGE CASE
26783	CBER25-TP BORING KIT	CBER25-TP, SGL-0750 BAR HOLDER, ER25 COLLET NUT, ER25 COLLET NUT WRENCH, CBT-050300, CBT-060300, CBT-080300, CBT-100400, CBT-110400, CBT-120500, CBT-140500, CBT-160625, CBT-180750, CBT-200750 CARBIDE BORING TOOLS, CTH-125250 CARBIDE TOOL HOLDER, (10) TPGT-2(1.5)1-2C C-6 TIN COATED CARBIDE INSERTS AND STORAGE CASE
26784	CBER32-CP BORING KIT	CBER32-CP/DI, SGL-1000 BAR HOLDER, ER32 COLLET NUT, ER32 COLLET NUT WRENCH, CBT-120500, CBT-140500, CBT-160625, CBT-180750, CBT-200750 CARBIDE BORING TOOLS, 250375 SLEEVE ADAPTER, TA-250ATX, TA-312ATX, TA-375ATX BORING BARS, (2) WCMT-020104 GRADE C-6 TIN COATED, (3) TCMT-1.2(1.2)1-UF GRADE C-6 TIN COATED, (5) CPMT-2(1.5)0-UF C-6 TIN COATED CARBIDE INSERTS AND STORAGE CASE
26785	CBER32-TP BORING KIT	CBER32-TP, SGL-1000 BAR HOLDER, ER32 COLLET NUT, ER32 COLLET NUT WRENCH, CBT-120500, CBT-140500, CBT-160625, CBT-180750, CBT-200750 CARBIDE BORING TOOLS, 250375 SLEEVE ADAPTER, TA-250ATX, TA-312ATX, TA-375ATX BORING BARS, (2) WCMT-020104 GRADE C-6 TIN COATED, (3) TCMT-1.2(1.2)1-UF GRADE C-6 TIN COATED, (5) TPGT-2(1.5)1-2C C-6 TIN COATED CARBIDE INSERTS AND STORAGE CASE
26786	CBER40-CP BORING KIT	CBER40-CP/DI, SGL-1250 BAR HOLDER, ER40 COLLET NUT, ER40 COLLET NUT WRENCH, CBT-120500, CBT-140500, CBT-160625, CBT-180750, CBT-200750 CARBIDE BORING TOOLS, 250500 SLEEVE ADAPTER, TA-250BTX, TA-312BTX, TA-375BTX, TA-437BTX, TA-500BTX BORING BARS, (2) WCMT-020104 GRADE C-6 TIN COATED, (3) TCMT-1.2(1.2)1-UF GRADE C-6 TIN COATED, (5) CPMT-2(1.5)0-UF C-6 TIN COATED CARBIDE INSERTS AND STORAGE CASE
26787	CBER40-TP BORING KIT	CBER40-TP, SGL-1250 BAR HOLDER, ER40 COLLET NUT, ER40 COLLET NUT WRENCH, CBT-120500, CBT-140500, CBT-160625, CBT-180750, CBT-200750 CARBIDE BORING TOOLS, 250500 SLEEVE ADAPTER, TA-250BTX, TA-312BTX, TA-375BTX, TA-437BTX, TA-500BTX BORING BARS, (2) WCMT-020104 GRADE C-6 TIN COATED, (3) TCMT-1.2(1.2)1-UF GRADE C-6 TIN COATED, (5) TPGT-2(1.5)1-2C C-6 TIN COATED CARBIDE INSERTS AND STORAGE CASE

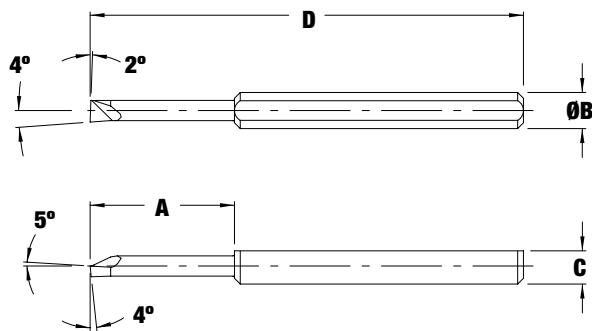
CBER KITS

1/8" & 1/4" SOLID CARBIDE BORING TOOLS

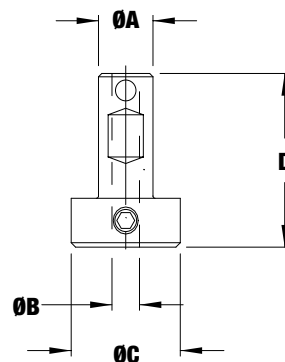
SOLID CARBIDE TOOLS

PART NO.	DESCRIPTION	MIN. BORE DIA.	A	ØB	C	D
15200	CBT-050150	.050	.150	.125	.115	1.500
15201	CBT-050300		.300			
15202	CBT-050400		.400			
15203	CBT-060150	.060	.150			
15204	CBT-060300		.300			
15205	CBT-060500		.500			
15206	CBT-080150	.080	.150			
15207	CBT-080300		.300			
15208	CBT-080500		.500			
15209	CBT-100200	.100	.200			
15210	CBT-100400		.400			
15211	CBT-100600		.600			
15212	CBT-100700		.700			
15213	CBT-110200	.110	.200			
15214	CBT-110400		.400			
15215	CBT-110600		.600			
15216	CBT-110700		.700			
15246	CBT-120250	.120	.250			
15247	CBT-120375		.375			
15248	CBT-120500		.500			
15249	CBT-120625		.625			
15250	CBT-120750	.750				
15251	CBT-140250	.140	.250			
15252	CBT-140375		.375			
15253	CBT-140500		.500			
15254	CBT-140625		.625			
15255	CBT-140750		.750			
15256	CBT-160375	.160	.375			
15257	CBT-160500		.500			
15258	CBT-160625		.625			
15259	CBT-160750		.750			
15260	CBT-160875	.875				
15261	CBT-180500	.180	.500			
15262	CBT-180625		.625			
15263	CBT-180750		.750			
15264	CBT-180875		.875			
15265	CBT-1801000		1.000			
15266	CBT-1801125		1.125			
15267	CBT-200500	.200	.500			
15268	CBT-200625		.625			
15269	CBT-200750		.750			
15270	CBT-200875		.875			
15271	CBT-2001000		1.000			
15272	CBT-2001250		1.250			

- 1/8" SHANK TOLERANCE $-.0001" / -.0003"$
- 1/4" SHANK TOLERANCE $-.0001" / -.0005"$
- SHANK O.A.L. TOLERANCE $\pm .010"$
- 10% COBALT MICRO GRAIN CARBIDE
- GROUND FLAT TO INSURE CUTTING EDGE IS ON CENTER LINE

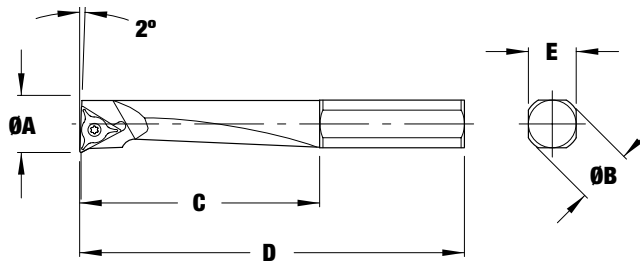


Carbide Tool Holder



PART NO.	DESCRIPTION	ØA	ØB	ØC	D
20195	CTH-125250	.250	.125	.500	.700
15160	CTH-125375	.375	.125	.500	2.000
15151	250375 SLEEVE	.375	.250	—	1.300
15165	CTH-250500	.500	.250	.625	2.000

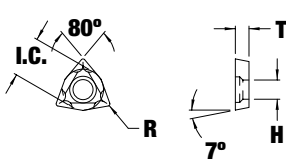
TA & TAS BORING BARS



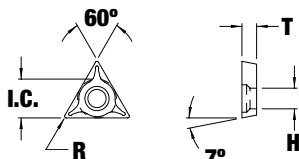
PART NO.	DESCRIPTION	MIN. BORE ØA	ØB	C	D	E	INSERT		
							I.C.	T	STYLE
10150	TA-250ATX	.250	.375	1.060	2.437	.310	.156	.063	WCMT
10151	TA-312ATX	.312		1.430	2.750		.156	.078	TCMT
10152	TA-375ATX	.375		1.750	3.062		.156	.078	TCMT
10140	TAS-250BTX	.250	.500	.500	1.875	.437	.156	.063	WCMT
10136	TA-250BTX	.250		1.060	2.437		.156	.063	WCMT
10141	TAS-312BTX	.312		.625	2.000		.156	.078	TCMT
10137	TA-312BTX	.312		1.430	2.750		.156	.078	TCMT
10142	TAS-375BTX	.375		.750	2.062		.156	.078	TCMT
10138	TA-375BTX	.375		1.750	3.062		.156	.078	TCMT
10143	TAS-437BTX	.437		.875	2.125		.250	.093	TPGT / TPGW
10139	TA-437BTX	.437		2.060	3.375		.250	.093	TPGT / TPGW
10127	TAS-500BTX	.500		1.000	2.312		.250	.093	TPGT / TPGW
10118	TA-500BTX	.500		2.180	3.500		.250	.093	TPGT / TPGW

CARBIDE INSERTS

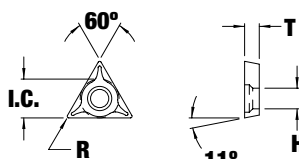
WCMT



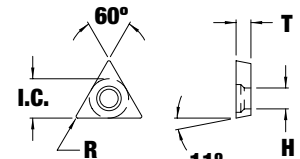
TCMT



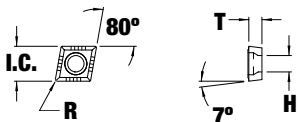
TPGT



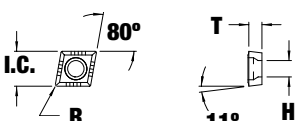
TPGW



CCMT

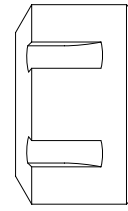


CPMT



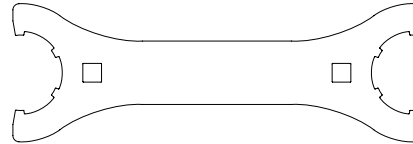
DESCRIPTION	I.C.	R	T	H	PART NUMBER			
					C-2	C-2 TIN	C-6	C-6 TIN
WCMT 020102	.156	.008	.063	.095	13460	14460	13461	14461
WCMT 020104	.156	.015	.063	.095	13470	14470	13471	14471
TCMT 1.2(1.2)1 UF	.156	.015	.078	.087	13366	14366	13367	14367
TCMT 1.2(1.2)2 UF	.156	.031	.078	.087	13368	14368	13369	14369
TPGT 2(1.5)1-2C	.250	.015	.093	.115	13370	14370	13380	14380
TPGT 2(1.5)2-2C	.250	.031	.093	.115	13374	14374	13384	14384
TPGW 2(1.5)0	.250	.002	.093	.115	13378	14378	13388	14388
TPGW 2(1.5)1	.250	.015	.093	.115	13379	14379	13389	14389
TPGW 2(1.5)2	.250	.031	.093	.115	13390	14390	13395	14395
CCMT 2(1.5)0 UF	.250	.008	.093	.110	13210	14210	13211	14211
CCMT 2(1.5)1 UF	.250	.015	.093	.110	13212	14213	13213	14212
CPMT 2(1.5)0-2A	.250	.008	.093	.110	13610	14610	13612	14612
CPMT 2(1.5)1-2A	.250	.015	.093	.110	13620	14620	13622	14622

Part No.	DESCRIPTION
26740	ER20 COLLET NUT
26741	ER25 COLLET NUT
26742	ER32 COLLET NUT
26743	ER40 COLLET NUT



COLLET NUT

Part No.	DESCRIPTION
26744	ER20 COLLET NUT WRENCH
26745	ER25 COLLET NUT WRENCH
26746	ER32 COLLET NUT WRENCH
26747	ER40 COLLET NUT WRENCH



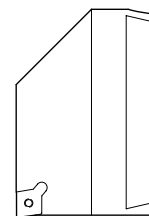
COLLET NUT WRENCH

Part No.	DESCRIPTION
20581	SGL-0625 BAR HOLDER
20582	SGL-0750 BAR HOLDER
20586	SGL-1000 BAR HOLDER
20587	SGL-1250 BAR HOLDER

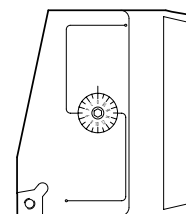


SGL BAR HOLDER

Part No.	DESCRIPTION
20532	CB0625-CP/DI INSERT HOLDER
20531	CB0625-TP INSERT HOLDER
20537	CB0750-CP/DI INSERT HOLDER
20536	CB0750-TP INSERT HOLDER
20388	CB1-CP/DI INSERT HOLDER
20387	CB1-TP INSERT HOLDER
21697	CB1-CP/DI-TA INSERT HOLDER ASSEMBLY
21698	CB1-TP-TA INSERT HOLDER ASSEMBLY
20393	CB1.25-CP/DI INSERT HOLDER
20392	CB1.25-TP INSERT HOLDER
21699	CB1.25-CP/DI-TA INSERT HOLDER ASSEMBLY
21700	CB1.25-TP-TA INSERT HOLDER ASSEMBLY

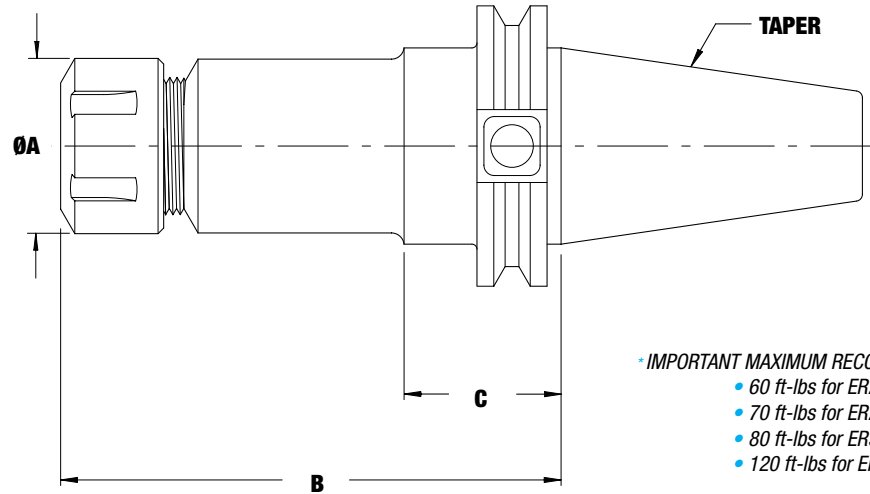


INSERT HOLDER

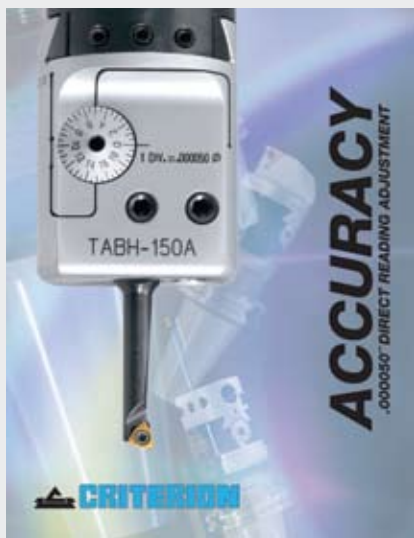


TA INSERT HOLDER ASSEMBLY

- Shank Taper is AT3 or Better
- Shanks Balanced for 10,000 RPM



PART NO.	DESCRIPTION	ØA	B	C	TAPER
26751	CV40-ER20 COLLET HOLDER STD LG	1.26	4.00	1.38	CV40
26752	CV50-ER20 COLLET HOLDER STD LG	1.26	4.00	1.38	CV50
26753	BT40-ER20 COLLET HOLDER STD LG	1.26	4.00	1.06	BT40
26754	CV40-ER25 COLLET HOLDER STD LG	1.65	4.00	1.38	CV40
26755	CV50-ER25 COLLET HOLDER STD LG	1.65	4.00	1.38	CV50
26756	BT40-ER25 COLLET HOLDER STD LG	1.65	4.00	1.06	BT40
26757	CV40-ER32 COLLET HOLDER STD LG	1.88	4.00	1.38	CV40
26758	CV50-ER32 COLLET HOLDER STD LG	1.88	4.00	1.38	CV50
26759	BT40-ER32 COLLET HOLDER STD LG	1.88	4.00	1.06	BT40
26760	CV40-ER40 COLLET HOLDER STD LG	2.48	4.00	1.38	CV40
26761	CV50-ER40 COLLET HOLDER STD LG	2.48	4.00	1.38	CV50
26762	BT40-ER40 COLLET HOLDER STD LG	2.48	4.00	1.06	BT40



A complete line of 50 Millionths on Diameter Adjustable Boring Heads

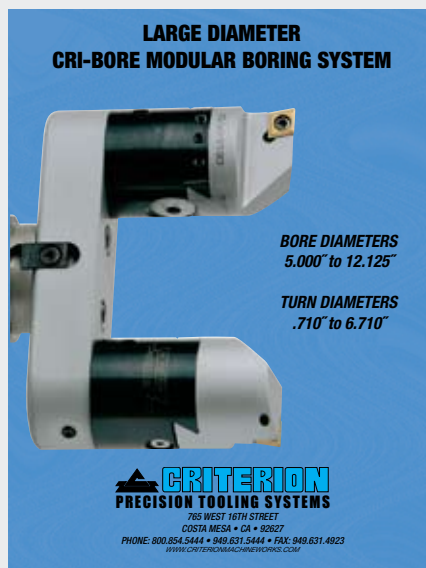


202 Balance Kits for any 202B Style boring head made by Criterion. 202B boring heads now can operate at speeds up to 5,000 RPM

US Patent 7,309,194 B2



Cri-Tip Modular Boring System means you can use the versatile Criterion style boring systems in competitor's modular systems



Large Diameter bores are made easier with the Cri-Bore Large Diameter Boring System. This system is capable of both I.D. boring and O.D. turning.



TinyMite Boring Heads 3/4" and 1" models. The 3/4" model is available with either an .125" diameter or ER11 I.D.



Adjustable Boring Bars from Criterion are available in 3 Different Style. The Original MD Style, Cri-Bar with flats and Cri-Bar without flats