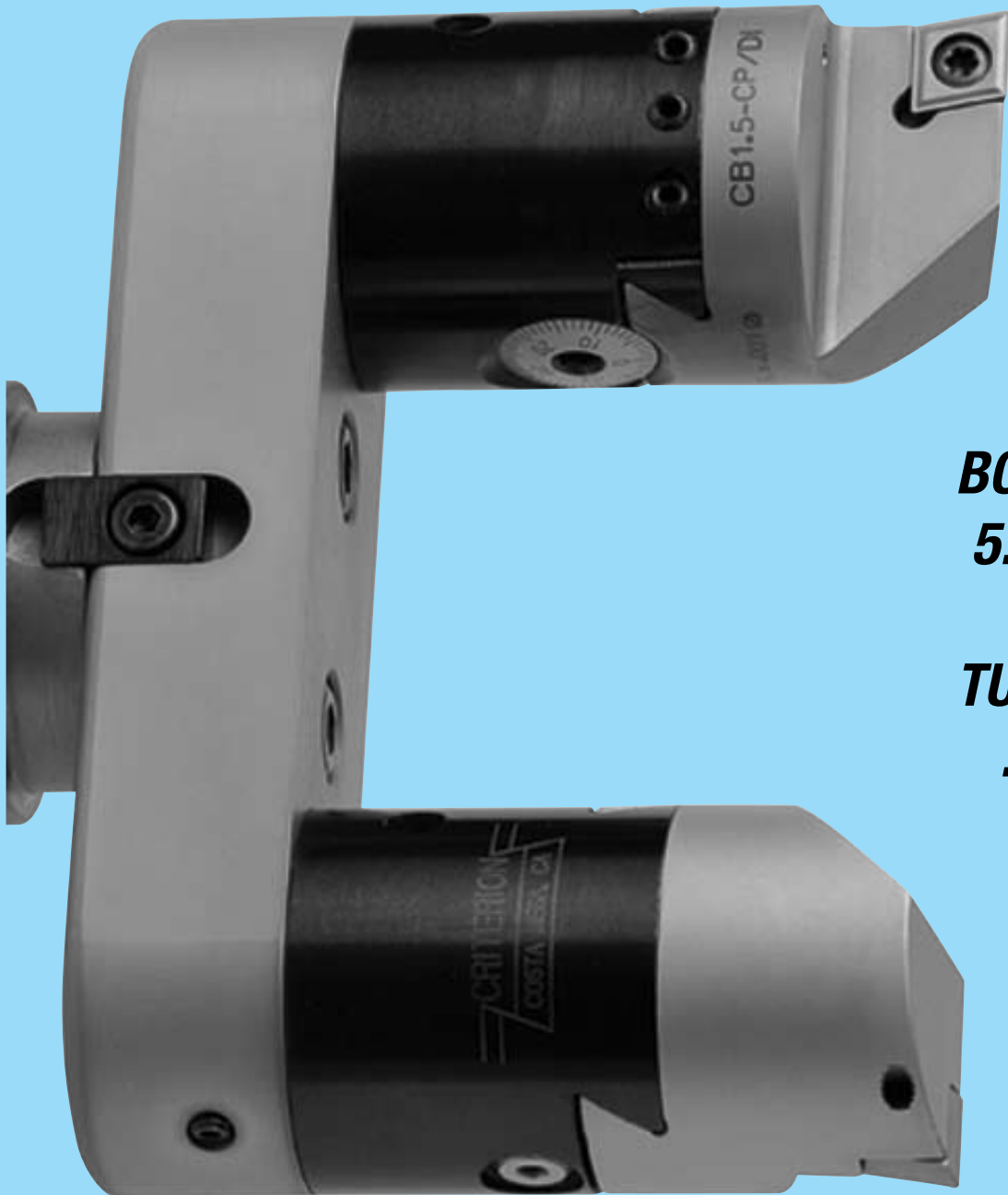


LARGE DIAMETER CRI-BORE MODULAR BORING SYSTEM



***BORE DIAMETERS
5.000" to 12.125"***

***TURN DIAMETERS
.710" to 6.710"***

 **CRITERION**
PRECISION TOOLING SYSTEMS

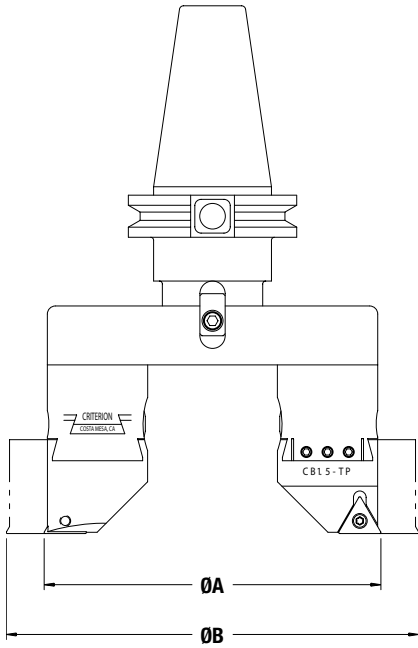
765 WEST 16TH STREET

COSTA MESA • CA • 92627

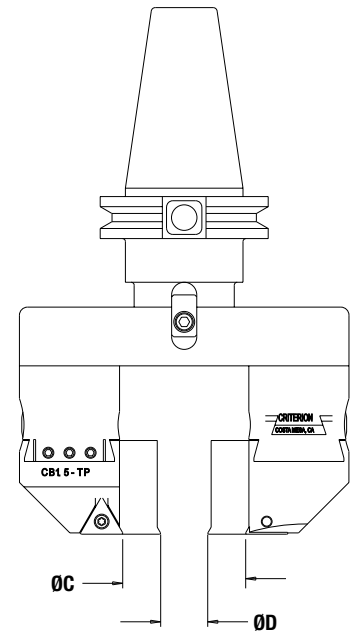
PHONE: 800.854.5444 • 949.631.5444 • FAX: 949.631.4923

WWW.CRITERIONMACHINEWORKS.COM

LCB 1.5 EXTENDER BAR KITS



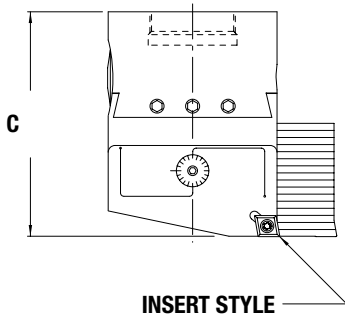
- LCB1.5 Modular Boring System has Interchangeable Extender Bars
- Extender Bars are through coolant capable
- Extender Bars are Designed to be used with standard CB1.5 Boring Heads
- Extender Bar Kits do not include boring head or tool holders



PART NO.	DESCRIPTION	ØA	ØB	ØC	ØD
25365	LCB1.5-EB 5/6 EXTENDER BAR KIT	5.000	6.125	.710	1.830
25366	LCB1.5-EB 6/7 EXTENDER BAR KIT	6.000	7.125	1.710	2.830
25367	LCB1.5-EB 7/8 EXTENDER BAR KIT	7.000	8.125	2.710	3.830
25368	LCB1.5-EB 8/9 EXTENDER BAR KIT	8.000	9.125	3.710	4.830
25369	LCB1.5-EB 9/10 EXTENDER BAR KIT	9.000	10.125	4.710	5.830
25370	LCB1.5-EB 10/11 EXTENDER BAR KIT	10.000	11.125	5.710	6.830
25371	LCB1.5-EB 11/12 EXTENDER BAR KIT	11.000	12.125	6.710	7.830

NOTE: All Extender Bar Kits include the hardware to mount to the Intermediate adapter or the tool holder.
A counter balance weight is recommended when using only one boring head.
A TA Height Adapter is required when using a standard boring head and -TA boring head together

CB 1.5 CRI-BORE BORING HEAD



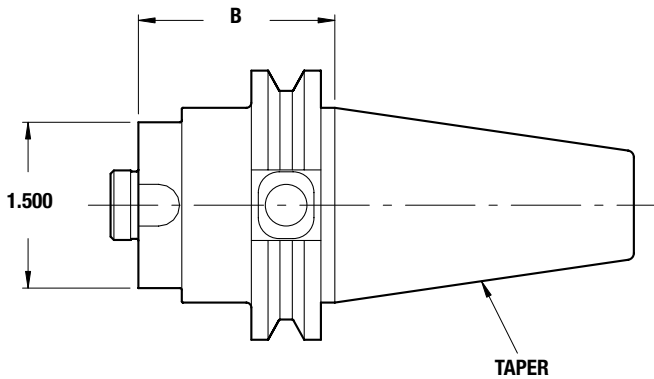
CB1.5-BD-CP/DI-TA IS ILLUSTRATED

- CB1.5 Cri-Bore Boring Heads are keyed for I.D. boring and O.D. turning
- CB1.5 Cri-Bore Boring Heads standard dial graduation is .001" on diameter

PART NO.	DESCRIPTION	C	INSERT STYLE	INSERT I.C	INSERT THICKNESS
25341	CB1.5-BD-CP/DI	2.480	CC or CP	.375	.156
25344	CB1.5-BD-CP/DI-TA*	3.180	TPGT / TPGW	.375	.156
25337	CB1.5-BD-TP	2.480	CC or CP	.375	.125
25336	CB1.5-BD-TP-TA*	3.180	TPGT / TPGW	.375	.125

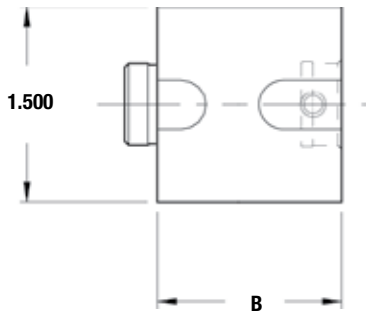
* -TA Style Boring Systems have a 50 millionths on diameter Micro Adjusting Dial. The total movement of the Micro Adjusting Dial is .006" on diameter.

LCB 1.5 TOOL HOLDERS



PART NO.	DESCRIPTION	TAPER	B
20115	LCB1.5-CV40	40 V-Flange	1.75
20116	LCB1.5-CV50	50 V-Flange	1.75
20117	LCB1.5-BT40	40 BT-Flange	1.75
20224	LCB1.5-HSK63A	HSK63A	1.75

LCB 1.5 EXTENSIONS



PART NO.	DESCRIPTION	B
25301	LCB1.5-IA1.5	1.50
25302	LCB1.5-IA3	3.00
25303	LCB1.5-IA4.5	4.50

NOTE: All Adapter kits include the hardware to mount the Intermediate adapter to the tool holder.

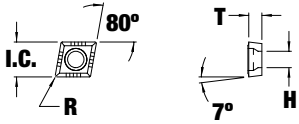
Extensions can not be combined. They must be used separately.

LCB 1.5 OPTIONAL PARTS

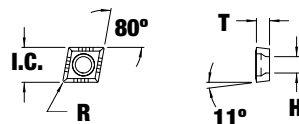
PART NO.	DESCRIPTION	NOTES
20375	LCB1.5-CBW COUNTER BALANCE WEIGHT	RECOMMENDED WHEN USING A SINGLE CB1.5 BORING HEAD
20376	LCB1.5-CBW-TA COUNTER BALANCE WEIGHT	RECOMMENDED WHEN USING A SINGLE CB1.5 -TA BORING HEAD
20117	LCB1.5-TP/TA HEIGHT ADAPTER	REQUIRED WHEN USING A CB1.5 AND CB1.5-TA BORING HEAD IN COMBINATION

CARBIDE INSERTS

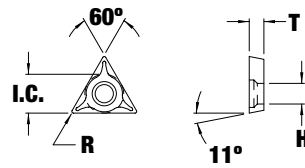
CCMT



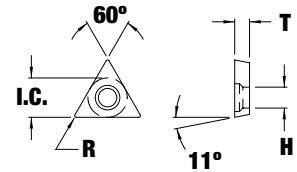
CPMT



TPGT

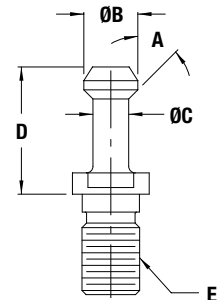
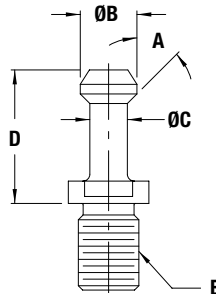
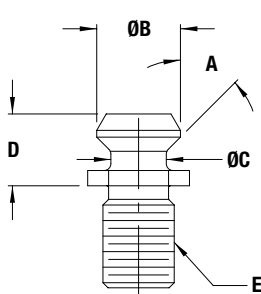


TPGW



DESCRIPTION	I.C.	R	T	H	PART NUMBER			
					C-2	C-2 TIN	C-6	C-6 TIN
TPGT 2(1.5)1-2C	.250	.015	.093	.115	13370	14370	13380	14380
TPGT 2(1.5)2-2C	.250	.031	.093	.115	13374	14374	13384	14384
TPGW 2(1.5)0	.250	.002	.093	.115	13378	14378	13388	14388
TPGW 2(1.5)1	.250	.015	.093	.115	13379	14379	13389	14389
TPGW 2(1.5)2	.250	.031	.093	.115	13390	14390	13395	14395
CCMT 2(1.5)0 UF	.250	.008	.093	.110	13210	14210	13211	14211
CCMT 2(1.5)1 UF	.250	.015	.093	.110	13212	14213	13213	14212
CPMT 2(1.5)0-2A	.250	.008	.093	.110	13610	14610	13612	14612
CPMT 2(1.5)1-2A	.250	.015	.093	.110	13620	14620	13622	14622

RETENTION KNOBS



PART NO.	DESCRIPTION	A	ØB	ØC	D	E
20130	CT40-ANSI	45°	.740	.490	.640	5/8"-11
20131	CT40-MAS I	45°	.590	.394	1.266	5/8"-11
20132	CT40-MAS II	60°	.590	.394	1.266	5/8"-11
20133	CT50-ANSI	45°	1.140	.820	1.000	1"-8
20134	CT50-MAS I	45°	.906	.669	1.772	1"-8
20135	CT50-MAS II	60°	.906	.669	1.772	1"-8
20136	BT40-MAS 1	45°	.590	.394	1.378	M16
20137	BT40-MAS II	60°	.590	.394	1.378	M16