

ADJUSTABLE BORING BARS

BORE RANGE .672" to 2.370" in Diameter



 **CRITERION**
PRECISION TOOLING SYSTEMS

765 West 16th Street
Costa Mesa • CA • 92627

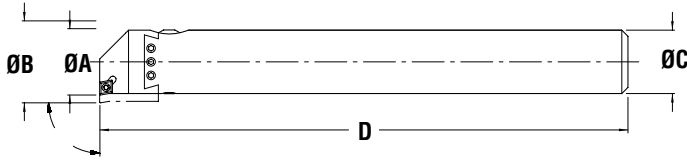
Phone: 800.854.7441 • 949.631.5444 • Fax: 949.631.4923

www.criterionmachineworks.com

CRI-BAR ADJUSTABLE BORING BARS - ROUND SHANKS

DESIGNED FOR USE WITH COLLET HOLDERS

CRI-BORE STYLE



- Dial graduations are .001" on diameter
- Micro Adjusting Dial graduations are 0.000050" on diameter
- Ideally suited for use in Collet or Shrink-Fit Holders

PART NO.	DESCRIPTION	MIN. BORE ØA	MAX. BORE ØB	ØC	D	INSERT I.C.	INSERT "T"	INSERT STYLE
20539	CB0625R-CP/DI CRI-BAR BORING BAR**	.672	.944	.625	5.25	.250	.093	CC or CP
20538	CB0625R-TP CRI-BAR BORING BAR**	.672	.944	.625	5.25	.250	.093	TPGT/TPGW
20549	CB0750R-CP/DI CRI-BAR BORING BAR	.825	1.087	.750	6.31	.250	.093	CC or CP
20548	CB0750R-TP CRI-BAR BORING BAR	.825	1.087	.750	6.31	.250	.093	TPGT/TPGW
20561	CB1000R-CP/DI CRI-BAR BORING BAR	1.050	1.320	1.000	8.25	.250	.093	CC or CP
20560	CB1000R-TP CRI-BAR BORING BAR	1.050	1.320	1.000	8.25	.250	.093	TPGT/TPGW
20571	CB1250R-CP/DI CRI-BAR BORING BAR	1.300	1.600	1.250	10.31	.250	.093	CC or CP
20570	CB1250R-TP CRI-BAR BORING BAR	1.300	1.600	1.250	10.31	.250	.093	TPGT/TPGW

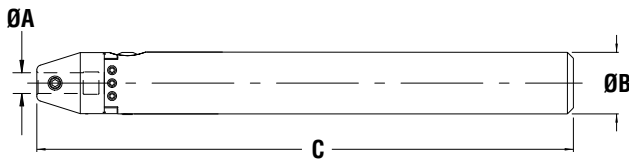
** CBER20-CP/DI Style Boring Systems Minimum Bore Diameter when using a CC style insert is .750" in diameter

MICRO ADJUSTING CRI-BORE STYLE 0.000050" ON DIAMETER

PART NO.	DESCRIPTION	MIN. BORE ØA	MAX. BORE ØB	ØC	D	INSERT I.C.	INSERT "T"	INSERT STYLE
20564	CB1000R-CP/DI-TA CRI-BAR BORING BAR	1.050	1.320	1.000	8.95	.250	.093	CC or CP
20563	CB1000R-TP-TA CRI-BAR BORING BAR	1.050	1.320	1.000	8.95	.250	.093	TPGT/TPGW
20574	CB1250R-CP/DI-TA CRI-BAR BORING BAR	1.300	1.600	1.250	11.00	.250	.093	CC or CP
20573	CB1250R-TP-TA CRI-BAR BORING BAR	1.300	1.600	1.250	11.00	.250	.093	TPGT/TPGW

TA Style Boring Systems have a 50 millionths on diameter Micro Adjusting Dial. The total movement of the Micro Adjusting Dial is .006" on diameter.

SGL STYLE



PART NO.	DESCRIPTION	MIN. BORE DIA.	MAX. BORE DIA.	ØA	ØB	C
20540	CB0625R-SGL CRI-BAR BORING BAR	.050	.380	.125	.625	5.25
20552	CB0750R-SGL CRI-BAR BORING BAR	.050	.470	.250	.750	6.50
20562	CB1000R-SGL CRI-BAR BORING BAR	.120	.640	.375	1.000	8.69
20572	CB1250R-SGL CRI-BAR BORING BAR	.250	.800	.500	1.250	10.60



CRITERION

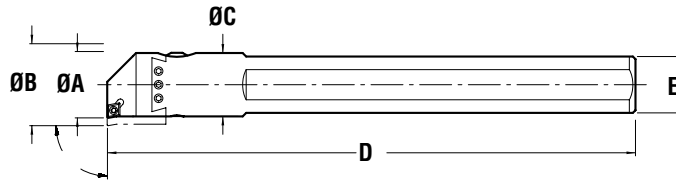
PHONE: 800.854.7441 • 949.631.5444 • FAX: 949.631.4923

CRI-BAR ADJUSTABLE BORING BARS - SQUARE SHANKS

DESIGNED FOR USE WITH SIDE LOCK END MILL HOLDERS

CRI-BORE STYLE

- Dial graduations are .001" on diameter
- Micro Adjusting Dial graduations are 0.000050" on diameter
- Ideally suited for use in Side Lock End Mill Holders



PART NO.	DESCRIPTION	MIN. BORE ØA	MAX. BORE ØB	ØC	D	E	INSERT I.C.	INSERT "T"	INSERT STYLE
20544	CB0625S-CP/DI CRI-BAR BORING BAR**	.672	.944	.625	5.25	.541	.250	.093	CC or CP
20543	CB0625S-TP CRI-BAR BORING BAR**	.672	.944	.625	5.25	.541	.250	.093	TPGT/TPGW
20554	CB0750S-CP/DI CRI-BAR BORING BAR	.825	1.087	.750	6.31	.660	.250	.093	CC or CP
20553	CB0750S-TP CRI-BAR BORING BAR	.825	1.087	.750	6.31	.660	.250	.093	TPGT/TPGW
20566	CB1000S-CP/DI CRI-BAR BORING BAR	1.050	1.320	1.000	8.25	.883	.250	.093	CC or CP
20565	CB1000S-TP CRI-BAR BORING BAR	1.050	1.320	1.000	8.25	.883	.250	.093	TPGT/TPGW
20576	CB1250S-CP/DI CRI-BAR BORING BAR	1.300	1.600	1.250	10.31	1.100	.250	.093	CC or CP
20575	CB1250S-TP CRI-BAR BORING BAR	1.300	1.600	1.250	10.31	1.100	.250	.093	TPGT/TPGW

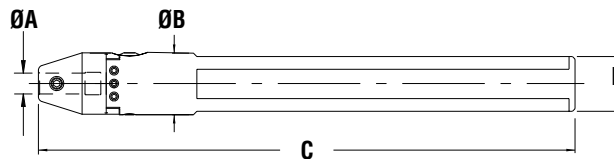
** CBER20-CP/DI Style Boring Systems Minimum Bore Diameter when using a CC style insert is .750" in diameter

MICRO ADJUSTING CRI-BORE STYLE 0.000050" ON DIAMETER

PART NO.	DESCRIPTION	MIN. BORE ØA	MAX. BORE ØB	ØC	D	E	INSERT I.C.	INSERT "T"	INSERT STYLE
20569	CB1000S-CP/DI-TA CRI-BAR BORING BAR	1.050	1.320	1.000	8.95	.883	.250	.093	CC or CP
20568	CB1000S-TP-TA CRI-BAR BORING BAR	1.050	1.320	1.000	8.95	.883	.250	.093	TPGT/TPGW
20579	CB1250S-CP/DI-TA CRI-BAR BORING BAR	1.300	1.600	1.250	11.00	1.100	.250	.093	CC or CP
20578	CB1250S-TP-TA CRI-BAR BORING BAR	1.300	1.600	1.250	11.00	1.100	.250	.093	TPGT/TPGW

TA Style Boring Systems have a 50 millionths on diameter Micro Adjusting Dial. The total movement of the Micro Adjusting Dial is .006" on diameter.

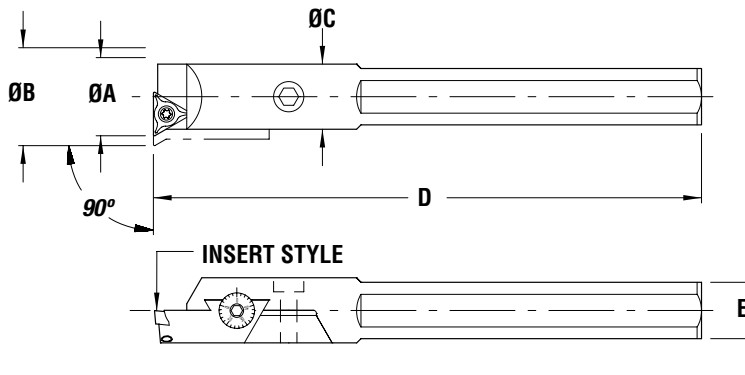
SGL STYLE



PART NO.	DESCRIPTION	MIN. BORE DIA.	MAX. BORE DIA.	ØA	ØB	C	D
20545	CB0625S-SGL CRI-BAR BORING BAR	.050	.380	.125	.625	5.25	.541
20557	CB0750S-SGL CRI-BAR BORING BAR	.050	.470	.250	.750	6.50	.660
20567	CB1000S-SGL CRI-BAR BORING BAR	.120	.640	.375	1.000	8.69	.883
20577	CB1250S-SGL CRI-BAR BORING BAR	.250	.800	.500	1.250	10.60	1.100

MD ADJUSTABLE BORING BARS

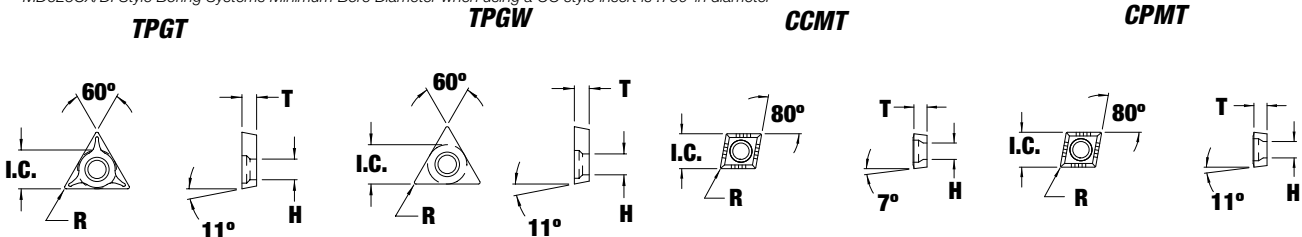
DESIGNED FOR USE WITH SIDE LOCK END MILL HOLDERS



- Dial graduations are .001" on diameter
- Unique cantilevered design assures exceptional rigidity
- Ideally suited for use in CNC Mills

PART NO.	DESCRIPTION	MIN. BORE ØA	MAX. BORE ØB	ØC	D	E	INSERT I.C.	INSERT "T"	INSERT STYLE
20451	MD-625CX/DI ADJUSTABLE BORING BAR**	.700	.960	.625	5.25	.541	.250	.093	CC or CP
20441	MD-625TX ADJUSTABLE BORING BAR	.710	.960	.625	5.25	.541	.250	.093	TPGT/TPGW
20453	MD-750CX/DI ADJUSTABLE BORING BAR	.850	1.200	.750	6.31	.660	.375	.093	CC or CP
20439	MD-750TX ADJUSTABLE BORING BAR	.890	1.280	.750	6.31	.660	.375	.125	TPGT/TPGW
20455	MD-1000CX/DI ADJUSTABLE BORING BAR	1.100	1.670	1.000	8.25	.883	.375	.156	CC or CP
20443	MD-1000TX ADJUSTABLE BORING BAR	1.130	1.650	1.000	8.25	.883	.375	.125	TPGT/TPGW
20457	MD-1250CX/DI ADJUSTABLE BORING BAR	1.370	2.330	1.250	10.31	1.100	.375	.156	CC or CP
20445	MD-1250TX ADJUSTABLE BORING BAR	1.400	2.370	1.250	10.31	1.100	.375	.125	TPGT/TPGW

** MD625CX/DI Style Boring Systems Minimum Bore Diameter when using a CC style insert is .750" in diameter



DESCRIPTION	I.C.	R	T	H	PART NUMBER			
					C-2	C-2 TIN	C-6	C-6 TIN
TPGT 2(1.5)1-2C	.250	.015	.093	.115	13370	14370	13380	14380
TPGT 2(1.5)2-2C	.250	.031	.093	.115	13374	14374	13384	14384
TPGT 321-2C	.375	.015	.125	.178	13371	14371	13381	14381
TPGT 322-2C	.375	.031	.125	.178	13372	14372	13382	14382
TPGW 2(1.5)0	.250	.002	.093	.115	13378	14378	13388	14388
TPGW 2(1.5)1	.250	.015	.093	.115	13379	14379	13389	14389
TPGW 2(1.5)2	.250	.031	.093	.115	13390	14390	13395	14395
TPGW-320	.375	.002	.125	.178	13377	14377	13387	14387
TPGW-321	.375	.015	.125	.178	13375	14375	13385	14385
TPGW-322	.375	.031	.125	.178	13376	4376	13386	14386
CCMT 2(1.5)0 UF	.250	.008	.093	.110	13210	14210	13211	14211
CCMT 2(1.5)1 UF	.250	.015	.093	.110	13212	14213	13213	14212
CCMT 3(2.5)0 UF	.375	.008	.156	.173	13215	14215	13216	14216
CCMT 3(2.5)1 UF	.375	.015	.156	.173	13217	14214	13214	14217
CCMT 3(2.5)2 UF	.375	.031	.156	.173	13218	14219	13219	14218
CPMT 2(1.5)0 2A	.250	.008	.093	.110	13610	14610	13612	14612
CPMT 2(1.5)1 2A	.250	.015	.093	.110	13620	14620	13622	14622
CPMT 3(2.5)1 1A	.375	.015	.156	.173	13440	14440	13442	14442
CPMT 3(2.5)1 1A	.375	.031	.156	.173	13450	14450	13452	14452